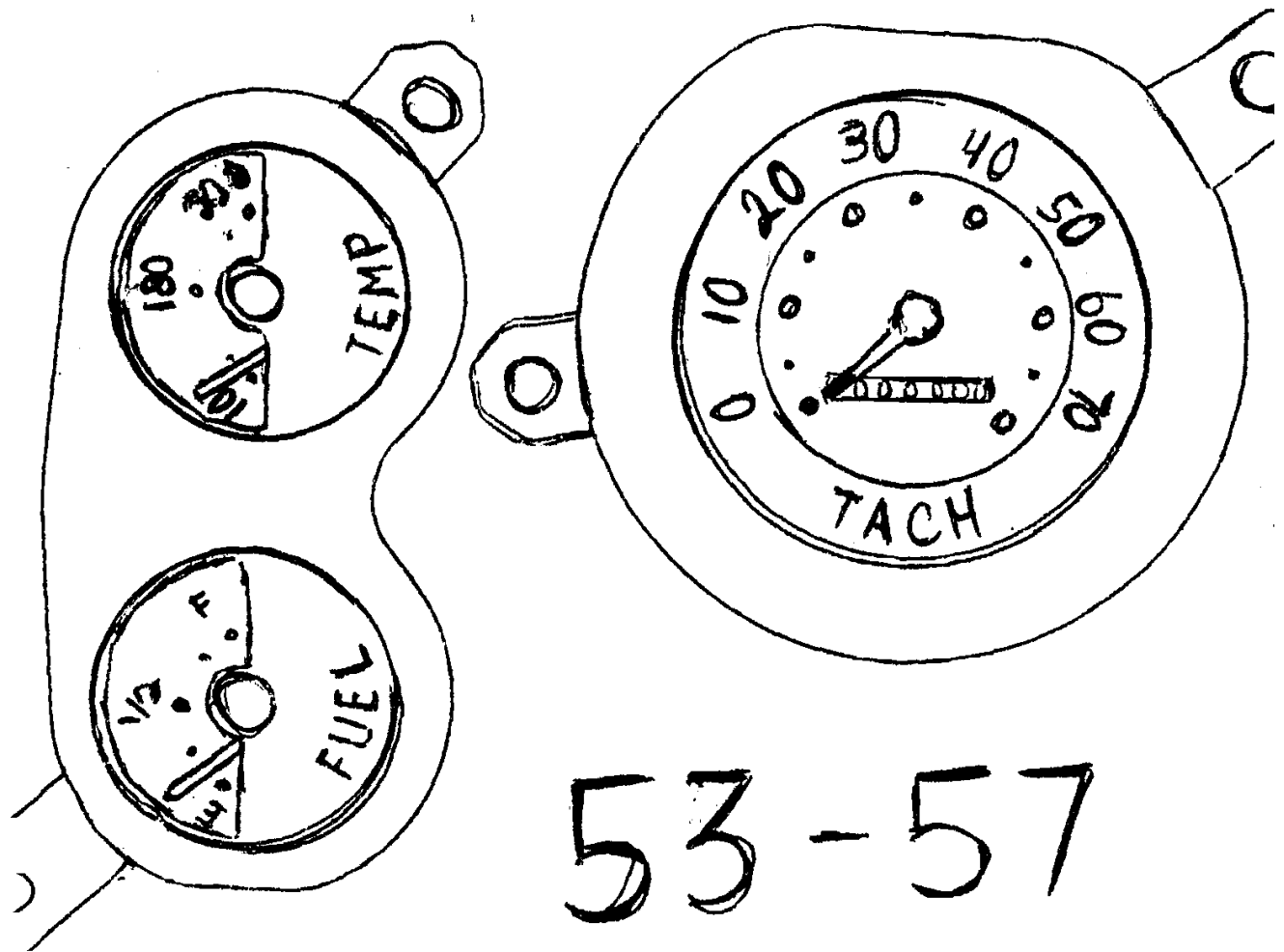
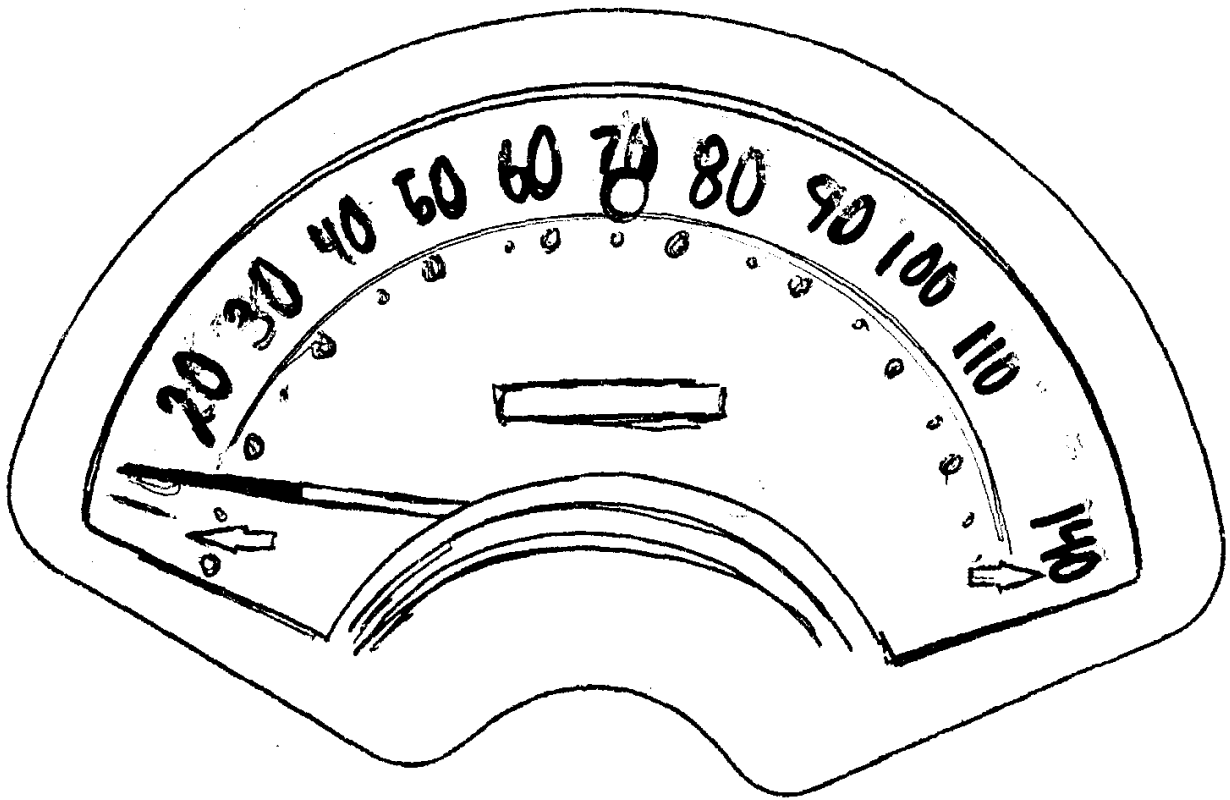


# ***RICK'S RESTORATION SERVICE***

3355 MAPLE GROVE ROAD  
 MANCHESTER, MD 21102  
 410-374-4220 OR 800-651-1270

- 53 TO 57 SPEEDO'S ARE ALL THE SAME
- 53 TO 57 BATTERY/OIL GAUGES ARE ALL THE SAME
- 53 TO 57 FUEL/TEMP GAUGES LOOK THE SAME, BUT 53 TO EARLY 55 HAVE MECHANICAL TEMP AND 55 TO 57 HAVE ELECTRIC TEMPS
- 53 TO 57 TACH'S LOOK CLOSE ONLY 53 & 54 ARE 5G AND 55 TO 57 ARE 6G, FLAT SIDE UP ON 53 TO 57 TACH'S, 55 TO 57 GAUGES HAVE PLASTIC FACES WITH GREEN DOTS ENGRAVED, CRIMPED ON BLACK METAL PLATES WITH OFF-SET EARS ON TACH AND SMALL CASES
- 58 SPEEDO IS BY ITSELF. CASE LOOKS LIKE 59 TO 62 BUT IS THICKER, POINTER LOOKS LIKE 59 TO 62 BUT SHAFT IS LONGER, INNER FACE IS PLASTIC WITH DOTS
- 58 TACH LOOKS LIKE 53 TO 57 GAUGE FACE WITH NO REV COUNTER AND IS MOUNTED IN 59 TO 62 CASE (6G OR 8G)
- 58 SMALL GAUGES HAVE 55 TO 57 GAUGE IN 59 TO 62 CASE, THEY HAVE ROUNDED POINTERS AND HAS CHROME BALL IN CENTER OF INNER BEZEL
- 59 TO 62 SPEEDO'S ARE THE SAME, BUT 59 HAS WHITE SLASHES
- 59 TO 62 POINTER IS PALE GREEN WITH SHORT SHAFT
- 59 TACH HAS WHITE SEPERATED LINES, SILKSCREENED ON FLAT BLACK PLATE, POINTER IS SAME AS 59 TO 62. COMPLETE STEM IS PALE GREEN, 53 TO 58 TACH POINTER IS SHORTER AND TIP OF POINTER IS WHITE, 59 TACH CASE HAS EARS STRAIGHT ACROSS LIKE 58 TO 62
- 59 SMALL GAUGES HAVE WHITE NUMBERS AND SLASHES SCREENED ON METAL PLATE WITH ROUND POINTER PAINTED WHITE LIKE 53 TO 58 AND CHROME INNER BEZEL IS STRAIGHT ACROSS
- 60 TO 62 SPEEDO'S ARE ALL THE SAME. GREEN SLASHES ON METAL PLATE
- 60 TACH'S HAVE WHITE NUMBERS HI OR LO
- 61 TO 62 TACH'S HAVE GREEN NUMBERS HI OR LO
- 60 TO 61 TACH'S ARE GREEN/GREEN HI OR LO
- 62 TACH'S ARE TAN/GREEN HI OR LO
- 60 TO 62 SMALL GAUGES ALL HAVE POINTY GREEN POINTERS
- 60 SMALL GAUGES SOMETIMES HAVE WHITE NUMBERS
- 61 TO 62 SMALL GAUGES ALL HAVE PALE GREEN NUMBERS AND SLASHES
- MID TO LATE 62 HAVE 240 DEGREE TEMPS.



53-57

58

